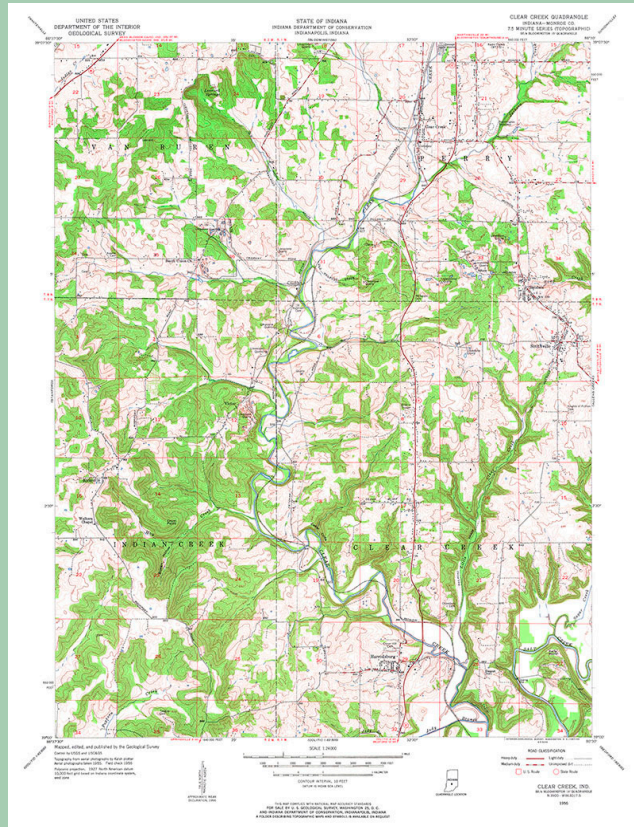




**INDIANA GEOLOGICAL
& WATER SURVEY**
INDIANA UNIVERSITY

Topographic Maps



Discovery Trunk



Topographic Maps Inventory List

- Hubbard Scientific topographic map reading kit:
 1. Guidebook (please do not mark, photocopy only)
 2. Flat panel with map symbols
 3. Panel #1 with topographic map
 4. Panel #2 with 3D surface
 5. Panel #3 with 3D topographic map
- Princeton Indiana-Illinois Quadrangle topographic map kit:
 1. Paper copy of quadrangle map
 2. 3D topographic map
- 5 magnifying glasses
- 5 foam mountain contour activities
- 20 copies of *Topographic Map Symbols* pamphlet
- 20 copies of *Bloomington Quadrangle* map
- 1 pair of stereoscope glasses
- Copy of *Stereogram Book of Contours* booklet
- Copy of *USGS Maps* booklet
- Copy of *Using Topographic Maps* book

Tips for Using this Discovery Trunk

- Please handle the 3D topographic maps and stereoscope glasses with care; they are fragile and can break. Direct facilitation with younger students is recommended.
- Extend students' thinking by asking open-ended questions and giving verbal prompts.
- Encourage students to develop ways to answer their own questions about maps and label their explorations and discoveries as scientific.